

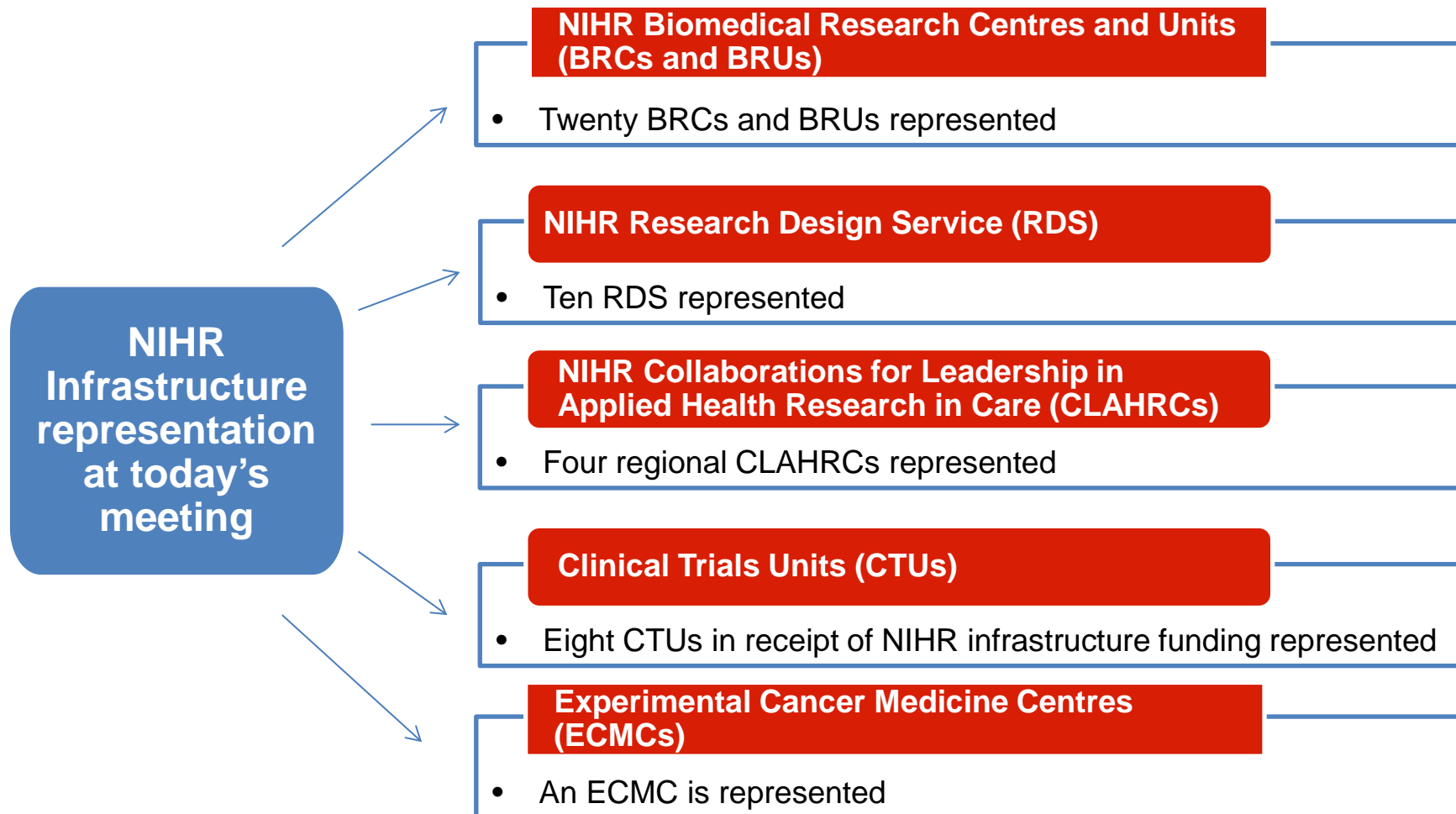
NIHR Office for Clinical Research Infrastructure (NOCRI)

First NIHR Statistics Meeting

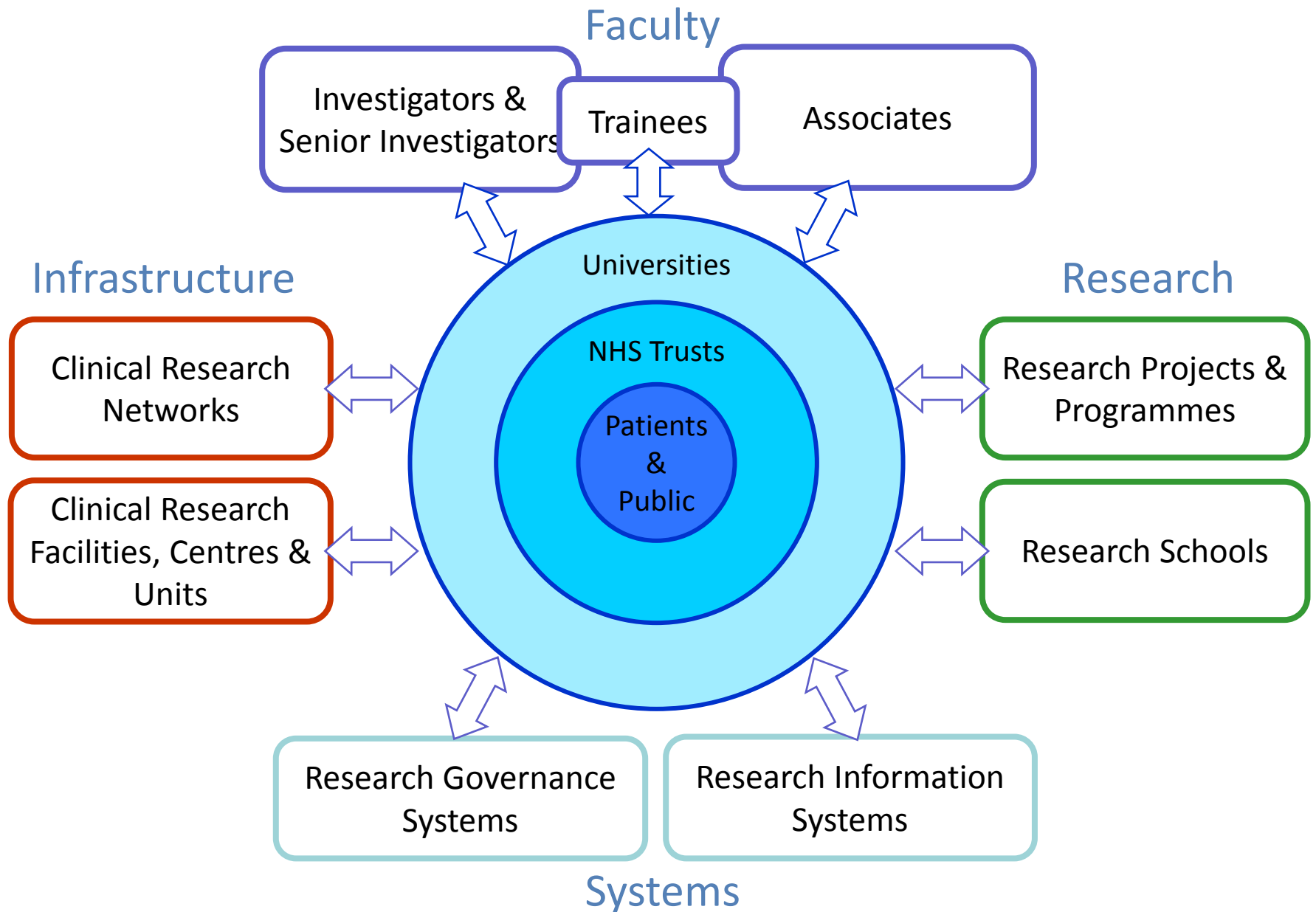


Make your own name card!

Given the complexity of the NIHR's statistics community within the infrastructure, we invite you to fill in your own name card



The NIHR Health Research System



Infrastructure

Clinical Research
Networks

Clinical Research
Facilities, Centres &
Units

*“...the support and facilities the NHS
needs for first class research...”*

Biomedical Research Centres and Units' collaboration

Every 5 years, University/NHS partnerships compete for approximately £800m of funding and yet collaboration is seen as key to optimally delivering on this investment

Use of equipment and techniques

- Imaging
- Novel assays

Patients

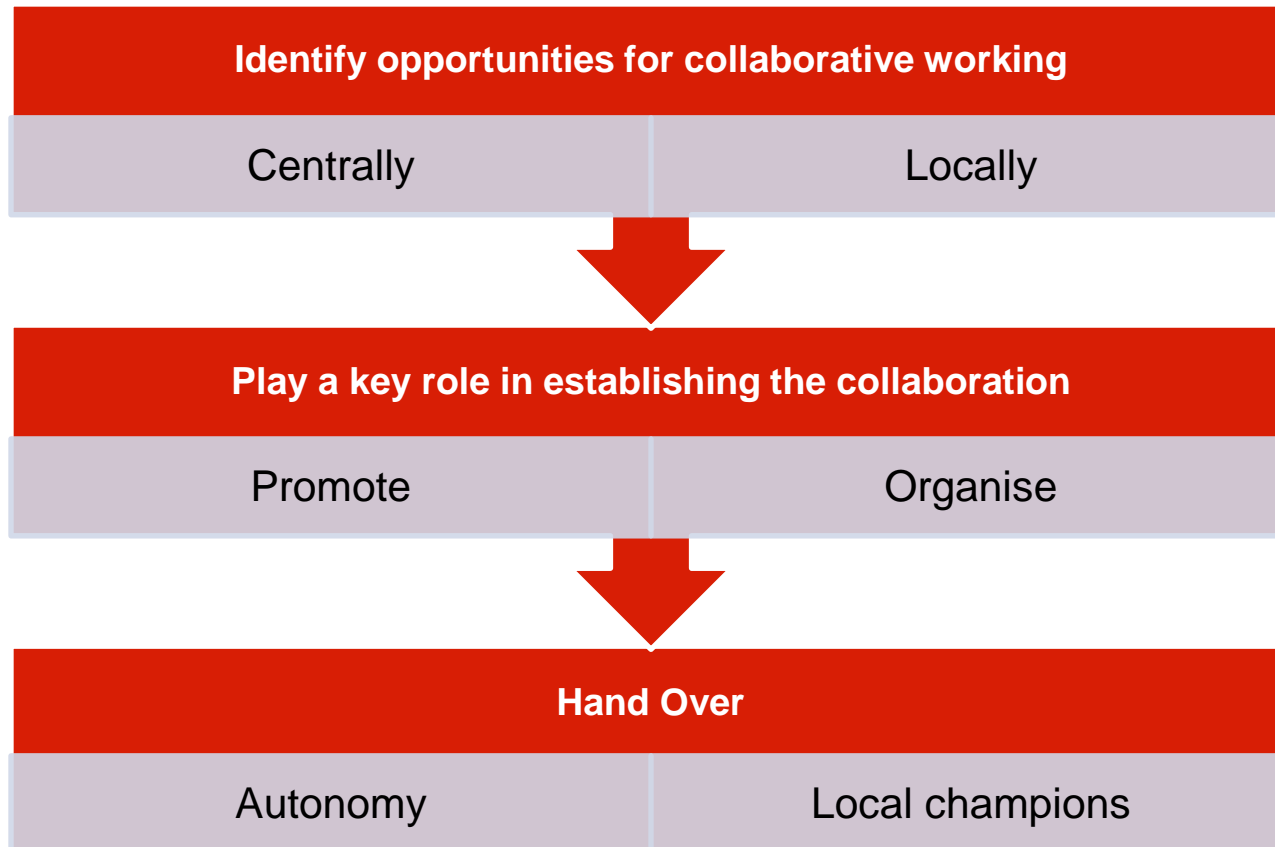
- Phenotyping
- Defined cohorts

Funding

- Joint applications to public bodies (MRC, Wellcome, Charities...)
- Industry

NOCRI – Infrastructure collaboration

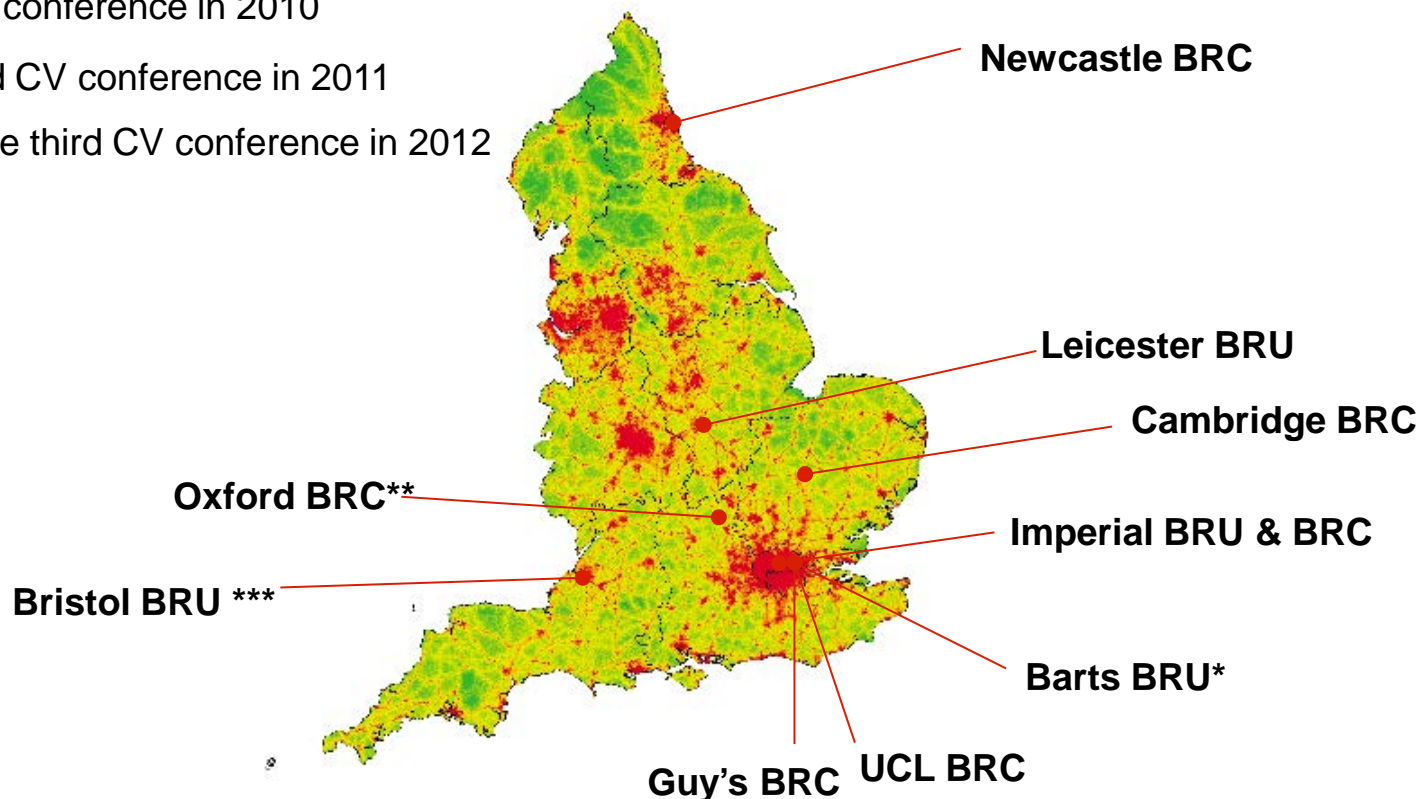
NOCRI promotes and facilitates this collaborative approach



Therapeutic Collaborations - Cardiovascular

With support from NOCRI, the NIHR Cardiovascular community have led the way in collaborative working

- * Hosted the first CV conference in 2010
- ** Hosted the second CV conference in 2011
- *** Booked to host the third CV conference in 2012



Leadership Collaborations

The Experimental Medicine Directors' Forum and R&D Directors' Forum brings leaders together to discuss common issues and opportunities

EM Directors' Forum

- BRC, BRU, CRF, ECMC Directors
- DH Colleagues
- Biannually
- NOCRI secretariat

R&D Directors' Forum

- NHS Trust R&D Directors hosting BRCs, BRUs, CRFs, ECMCs
- DH and Clinical Research Network Colleagues
- Annual
- NOCRI secretariat

Technical/operational Collaborations

NOCRI-led meetings tackle cross-cutting themes such as IS and Statistics, while BRU Managers meet for operational discussions

Information Systems Workshops

- Clinical Trials Management Systems
- Tissue Banking and Cohorts
- Data Warehousing
- NIHR Facilitating Resources

Statistics Workshop

- Promotion of NIHR statistical support
- Trial design
- Dealing with missing data
- Establishment of an NIHR statistical faculty

BRU Managers' Operational meeting

- HR
- Budgeting
- Training
- Reporting

NOCRI – Industry Relations



National Institute for
Health Research

Office for Clinical Research Infrastructure

Directly

- Internal/DH contacts

Via Trade Associations

- ABPI – Pharma
- BIA – Biotech
- BIVDA – Med Tech and Diagnostics
- CCRA - CROs

Conferences

- BIO
- EPIC
- Bio Trinity
- Genesis...

NOCRI – Industry Offer

The updated UK Experimental Medicine Website is the definitive place for industry partners to source EM facilities in the UK

The screenshot shows the homepage of the UK Experimental Medicine Resource Finder. At the top, there is a purple header with the title "UK Experimental Medicine Resource Finder" and links for "Sitemap" and "Contact Us". Below the header is a horizontal banner with various scientific images. A navigation menu includes "Home", "Resource Finder", "Translational Research Partnerships", "Eligibility", "FAQ", and "About". The main content area features a "Welcome" section with a paragraph describing the site's purpose and a larger image of a magnifying glass over the text "Resource Finder". Below this are three call-to-action buttons: "Contact Us" (with a hand holding a pipette), "Get Listed" (with laboratory glassware), and "Translational Research Partnerships" (with a network diagram). The footer contains copyright information and additional navigation links.

UK Experimental Medicine Resource Finder [Sitemap](#) [Contact Us](#)

[Home](#) [Resource Finder](#) [Translational Research Partnerships](#) [Eligibility](#) [FAQ](#) [About](#)

Welcome

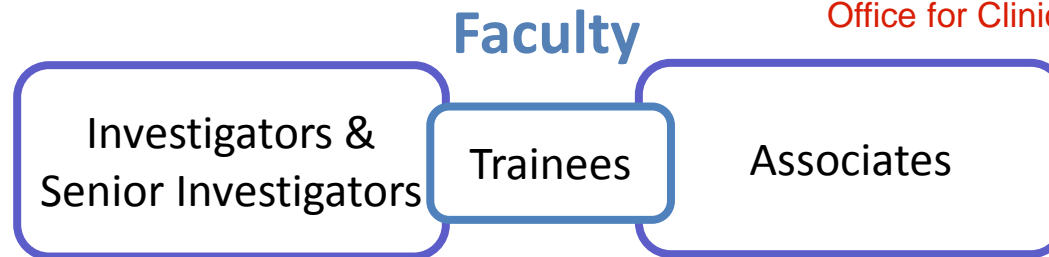
UK Experimental Medicine Resource Finder provides an optimum entry point for industry and academic investigators seeking information about experimental medicine in the UK.

It contains up-to-date information on over 50 major experimental medicine facilities with details of expertise, resources, techniques and technologies. Site users can search for facilities by location, health or disease research topic or skills and equipment available.

Resource Finder

[Contact Us](#) [Get Listed](#) [Translational Research Partnerships](#)

Copyright | [Contact Us](#) | [Site Map](#) | [A-Z List of Facilities](#) | [Log in](#)



...is the community of people that NIHR funds to:

- train as health researchers
- undertake and support research

With the purpose of creating..

“a vibrant community focused on research and innovation to improve the health and well-being of the nation”

Goals of the NIHR Faculty



- Build a leading research capability to attract, develop and retain the best research professionals with a national collegiate ethos
- Value leaders and collaborators
- Provide support to the academic training paths for all healthcare professionals and other key disciplines involved in health and social care research

Members of the NIHR Faculty



Investigators

- Engaged directly in research work

Senior Investigators

- 200 of the most eminent NIHR Investigators

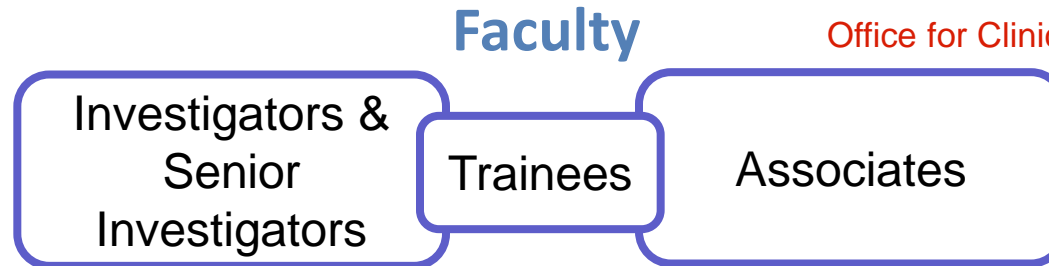
Trainees

- Pre-doctoral, Doctoral, Post-doctoral and Pre-Chair

Associates

- Support research: e.g.. recruit subjects, collect data

NIHR Training opportunities



NIHR Fellowships: open to all health professions

- Doctoral Training Fellowships
- Postdoctoral Fellowships
- Career Development Fellowships
- Senior Fellowships
- Contact NIHR Trainee Coordination Centre – further details in the delegate packs



***National Institute for
Health Research***

Office for Clinical Research Infrastructure

nocri@nhr.ac.uk